



Eco Mobile Homes Ltd  
55 Stoborough Meadow  
Wareham, Dorset  
BH20 5HP  
Company No: 07435856  
VAT: 104 7132 55  
TEL: 01202 760115

## Eco Mobile Homes Ltd Twin-Unit Mobile Home Specification

Welcome to Eco Mobile Home Ltd. Leading manufacturers of luxury mobile homes and log cabins. Based in the U.K. we manufacture bespoke top quality static caravans, mobile homes and residential garden annexes nationwide.

We've become specialists in high quality construction of the larger type of twin-unit log cabins and residential static caravans. The majority of our builds are maximum dimension 3-4 bedroom 65 x 22FT mobile homes that are designed for both life span, modern residential standard and hard to access sites.

Our Company is focused building bespoke lodges for the general public. We rarely produce the kind of caravan seen on holiday parks that are designed for a shorter life cycle. Our clients are often farmers who require agricultural workers dwellings and mostly private homeowners who require a residential quality mobile home to site in a garden for a relative to use, an instance that will often not require planning permission.

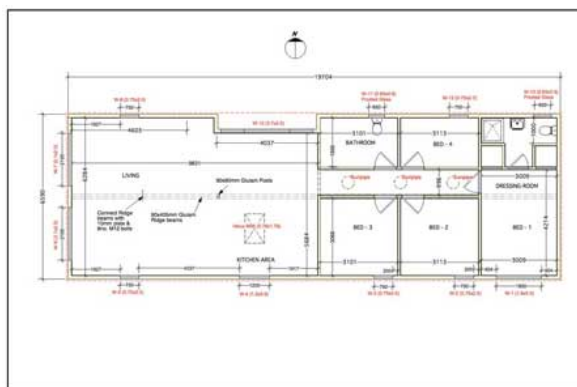
### Key Points

- The same wall thickness and insulation values as a conventional new build house. Suitable for year round occupation. 200mm insulated walls.
- Bespoke Design with unique floor plan, exterior and interior design.
- Low-profile chassis for a better appearance. Substantial 220mm floor timbers give superior rigidity underfoot.
- Proper 12mm internal plasterboard wall finish, painted. Real wood flooring, 100% wool carpets and real marble tiles, all as standard. Solid, clean, modern interiors, just like a normal house.
- Specialists in on-site assembly, for hard to access sites.
- These twin size mobile home caravans look and feel just like normal new build homes both inside and out.

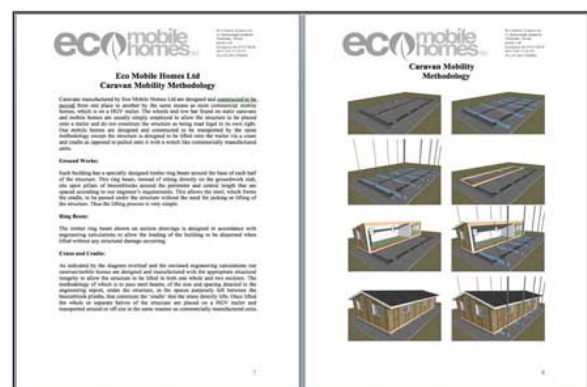
## Eco Mobile Homes Ltd Mobile Home Log Cabin Specification Options

**Design.** Bespoke design, individual floor plan, window layout, balconies, entrance features, roof details, all specifically designed to your requirements.

**Legal Report.** Full Structural Engineering with 50+page Legal Report, including unique specific calculations, detailing how each mobile home conforms to the definition of a 'caravan'.



[www. eco mobile homes .com](http://www.eco mobile homes .com)



[www. eco mobile homes .com](http://www.eco mobile homes .com)

**Frame Materials.** We use the same materials, wall thickness and contraction methods used to build normal residential houses. 140mm External wall timbers, 89mm Internal. 195mm Floor joists under 22mm Chip Board sub-floor. 195mm Roof rafters with 9mm roof deck. Glulam timber ridge beam. 9mm external wall sheathing with breather membrane.



[www. eco mobile homes .com](http://www.eco mobile homes .com)



[www. eco mobile homes .com](http://www.eco mobile homes .com)





Eco Mobile Homes Ltd  
55 Stoborough Meadow  
Wareham, Dorset  
BH20 5HP  
Company No: 07435856  
VAT: 104 7132 55  
TEL: 01202 760115

**Roof Types.** Options of standard pitch roof with flat or vaulted internal ceiling, also available are flat and mono-pitch roofs.



**Roof Finish.** Our standard finished for pitch roofs are either the 'Metrotile' aluminum sheet (left image) with shingle finish or the upgrade 'Cambrian' replica slate tiles (right image). Cedar tiles, Rubber roofs and grass roofs are all available.



## Windows.

Timber - stain finish (top left)

Timber - factory painted in choice of colour (top Right)

Aluminum Frame - powder coated in choice of colour (bottom left)

UPVC Plastic, in white, wood affect, grey (bottom right)



**Velux and Sun Tubes.** Large Velux roof lights as standard with Sun Tubes to hallways.





**Exterior Cladding.** We can offer a wide selection of external finishes to suit style and budget. Render board with cement render (top images) available in varying finishes. A wide selection of Timbers such as Cedar and Oak (middle images) both horizontal and vertically fitted. We also offer Cement Fiber Board, which looks like a painted timber. This is maintenance free durable product that can be re-painted for fresh appearance or colour (bottom images).



**Insulation.** We offer a selection of insulation options from convention glass wool (left image) or foam boards (right image) to Eco-friendly sheep's wools and recycled paper. Our standard option is Glass wool in the preformed sheets (batts) 150mm to floor, roof and external walls.



**Plasterboard and Plaster Skim.** Just like a normal house, walls are lined with 12mm foil back plasterboard and triple skimmed with plaster. Decorated in a choice of colour.



**Internal Carpentry.** Standard finish is real wood oak flooring and doors with painted MDF skirt, all in a choice of styles. Extensive range of alternative finishes available.





**Kitchen.** We set a kitchen budget of £5000 for clients to choose any kitchen from any supplier or from one of our extensive in-house ranges.



**Bathrooms and Toilets.** A budget for sanitary ware is set giving clients the option from a wide selection of styles and costing control.





Eco Mobile Homes Ltd  
55 Stoborough Meadow  
Wareham, Dorset  
BH20 5HP  
Company No: 07435856  
VAT: 104 7132 55  
TEL: 01202 760115

## Eco Mobile Homes Ltd - Prices 2012

Each lodge is priced to suit the client's requirements and budget. Prices include fitted kitchens / bathrooms, decorating, delivery, siting and service connections but exclude groundwork's, slab, furniture. The price will vary largely due to the choice, type and quantity of windows and choice of claddings. Prices are fully inclusive of delivery and turnkey construction.

20x40FT / 12x6m Mobile Home 2-3 bed will usually cost from £75,000 with UPVC windows and timber cladding.

65x22FT / 20x6.9m Twin Unit Mobiles 3-6 Bed need a realistic budget of +£110,000 for a fully finished and sited build.

Upgrades are generally 10-20% above the standard price with the greatest cost usually being the windows.

Prices include:

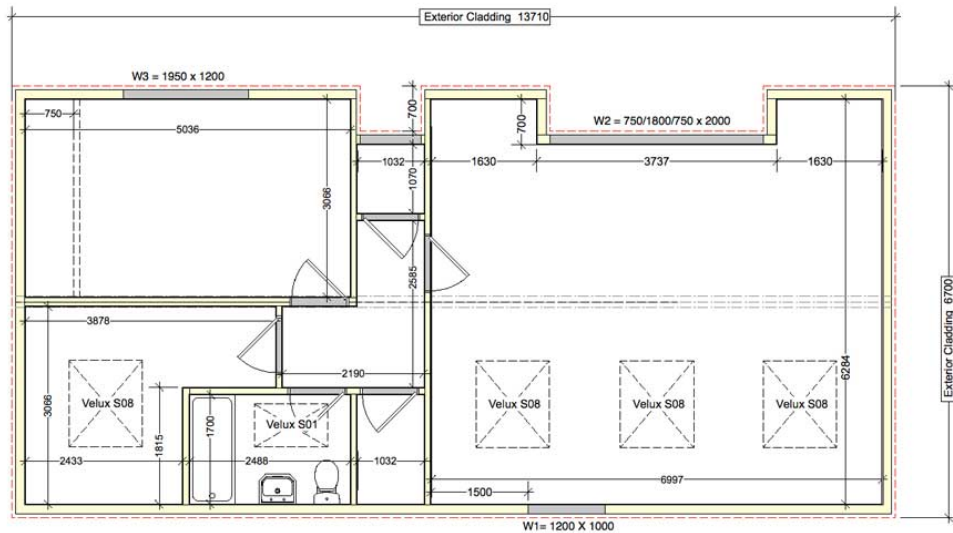
- Fully Delivery and Erection of the Structure
- Double Glazed Windows
- Roof Tiles
- Exterior Cladding
- Fully Insulated
- Plasterboard, Skim and Decoration
- All Plumbing and Electrics
- Internal Carpentry, flooring, skirting and sills
- Bathrooms
- Fully Fitted Kitchen



## Typical High Quality Mobile Home

- 45 x 22 FT (13.8 x 6.7 M)
- Fully Insulated to Building Regulation Values
- Windows: Aluminum Clad Exterior / Soft Wood Interior with Multiple Large Velux
- Powder-Coated Aluminum Rainwater Goods
- Real Wood Cedar Cladding to Exterior Wall, Soffit and Facia
- Composite Slate Tile Roof
- Luxury Fully Fitted Kitchen. Quality Bathrooms with Marble Tiles
- Plaster boarded and Plaster Skim. Fully Decorated
- Real Wood Oak Flooring and Oak Internal Doors
- Fully Delivery and Construction
- Zero VAT – No other costs

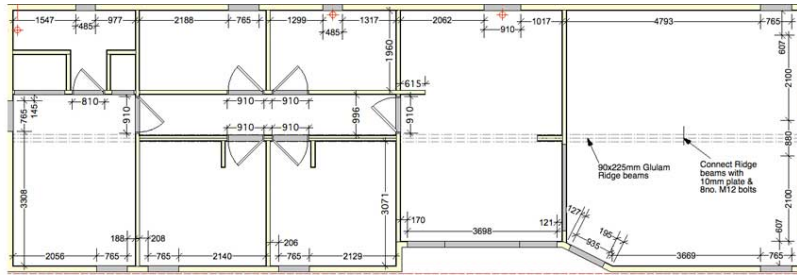
£93,400



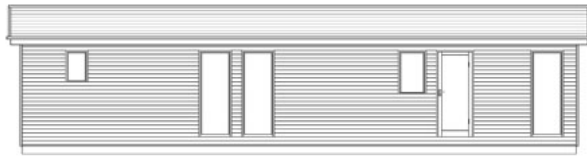
## Maximum Size Mobile Home finished to a High Standard

- 65 x 22 FT (20 x 6.7 M)
- Fully Insulated to Building Regulation Values
- Windows: Aluminum Clad Exterior / Soft Wood Interior with Multiple Large Velux
- Powder-Coated Aluminum Rainwater Goods
- Timber Style Cement Fibre Board Cladding in pastel colour. UPVC Soffit and Facia
- Composite Slate Tile Roof
- Luxury Fully Fitted Kitchen. Quality Bathrooms with Marble Tiles
- Plaster boarded and Plaster Skim. Fully Decorated
- Real Wood Oak Flooring and Oak Internal Doors
- Fully Delivery and Construction
- Zero VAT – No other costs

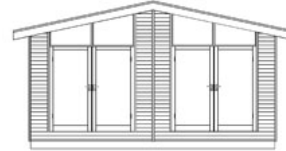
£122,000



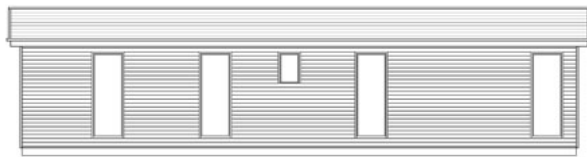




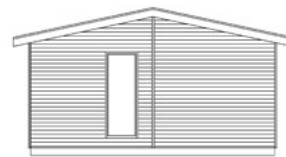
NORTH ELEVATION



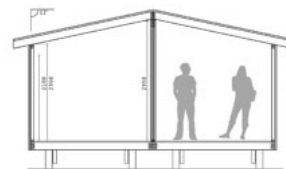
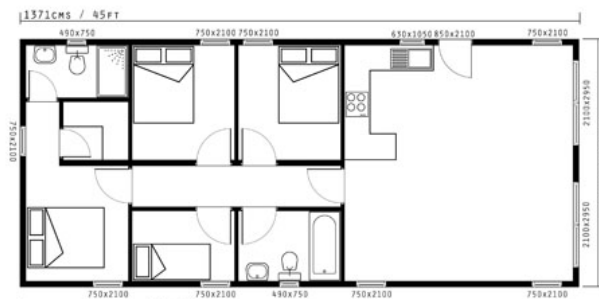
EAST ELEVATION



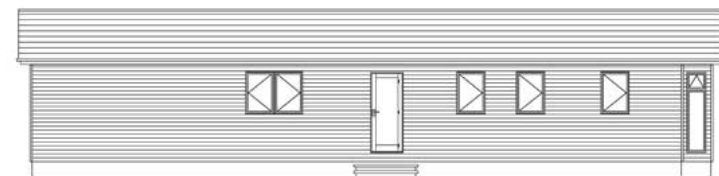
SOUTH (FRONT) ELEVATION



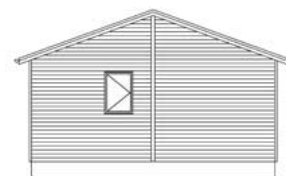
WEST ELEVATION



**3BED LODGE**  
20 X 45 FT  
6.1 X 13.71 M  
FROM £90,000



NORTH ELEVATION



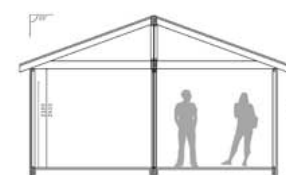
EAST ELEVATION



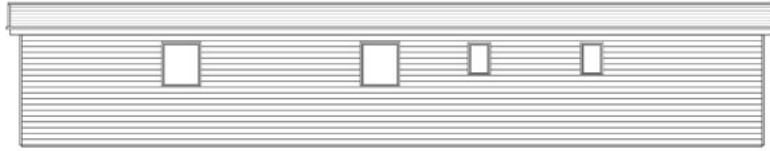
SOUTH (FRONT) ELEVATION



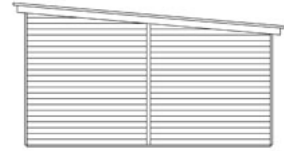
WEST ELEVATION



**FOREST LODGE STYLE**  
20 X 55 FT  
FROM £97,000



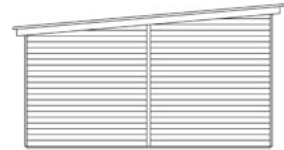
NORTH ELEVATION



EAST ELEVATION



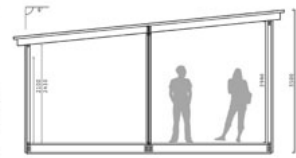
SOUTH (FRONT) ELEVATION



WEST ELEVATION

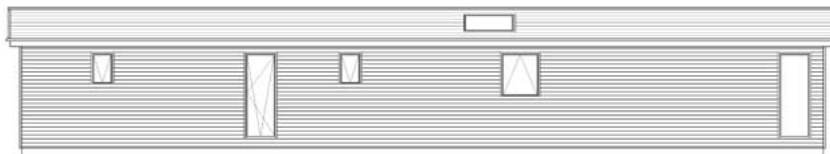


FLOORPLAN SCALE 1:100 @A4

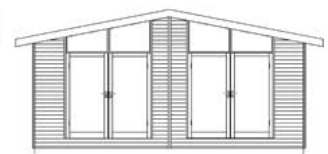


**ZEN LODGE**  
20 X 60 FT  
6.1 x 18.24 M

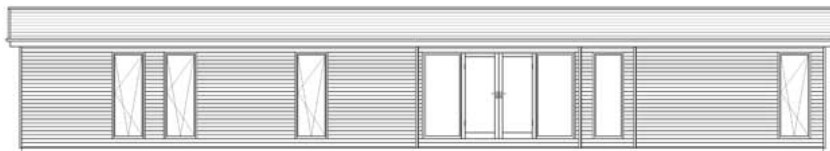
FROM £105,000



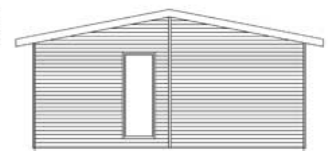
NORTH ELEVATION



EAST ELEVATION



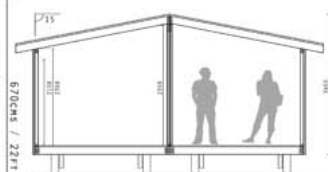
SOUTH (FRONT) ELEVATION



WEST ELEVATION



FLOORPLAN SCALE 1:100 @A4



**NEW LODGE**  
65 x 22 FT  
20 x 6.8 M

FROM £115,000

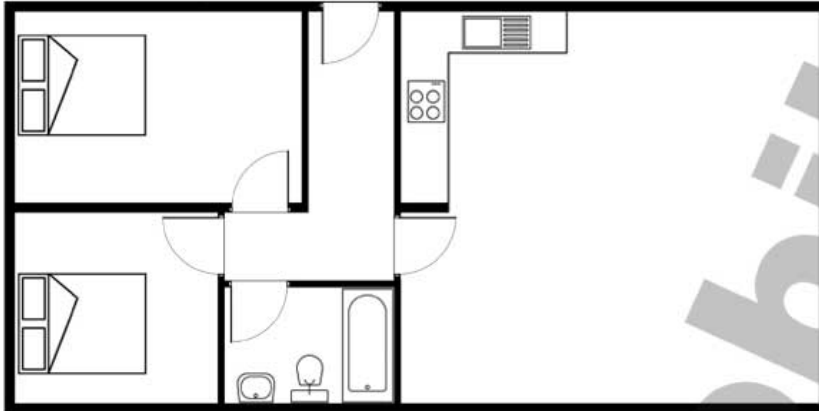




Eco Mobile Homes Ltd  
55 Stoborough Meadow  
Wareham, Dorset  
BH20 5HP  
Company No: 07435856  
VAT: 104 7132 55  
TEL: 01202 760115

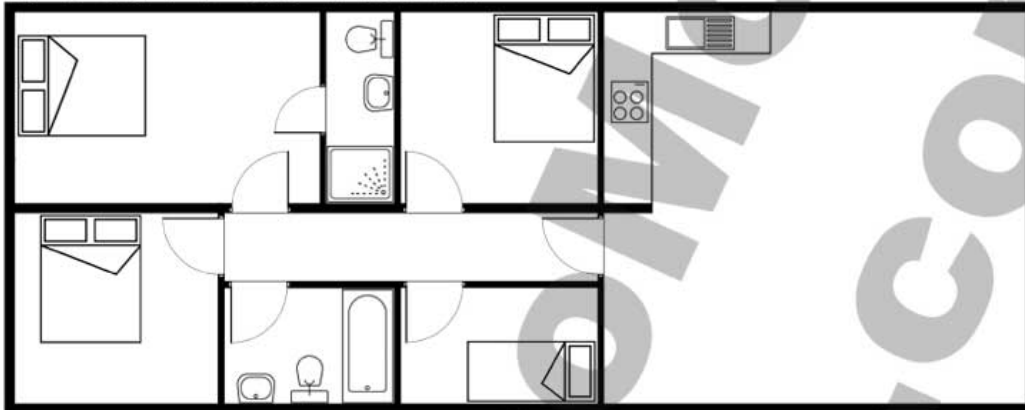
Eco Mobile Homes Ltd  
Floorplan Catalogue  
2012

20 x 40FT / 6.9 x 12.19M

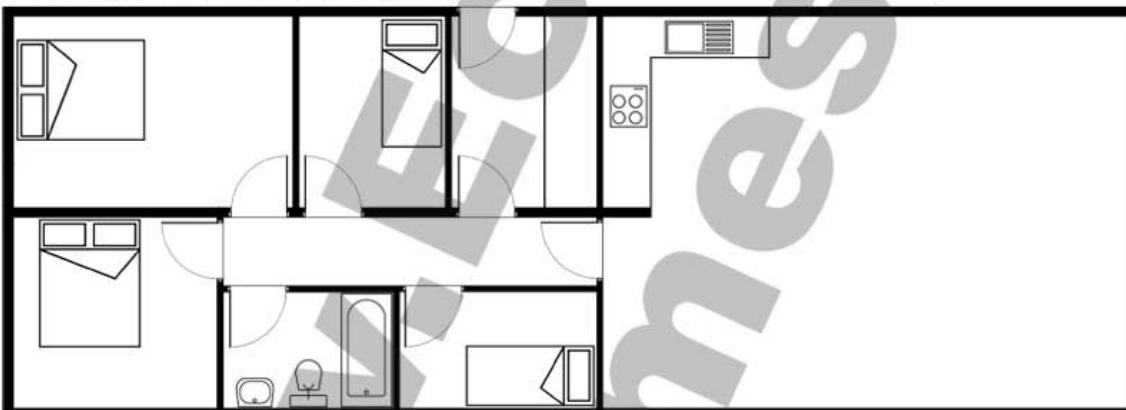


**SET1**

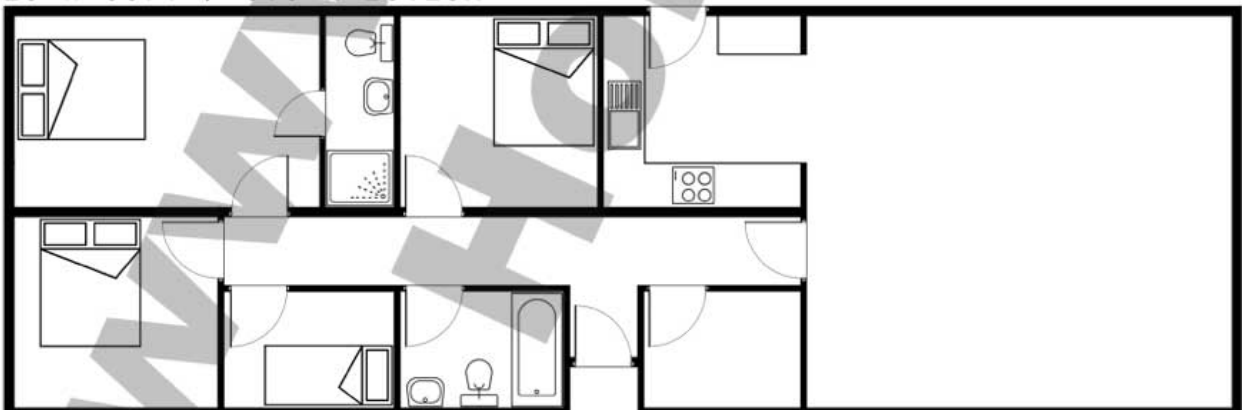
20 x 50FT / 6.9 x 15.24M



20 x 55FT / 6.9 x 16.76M

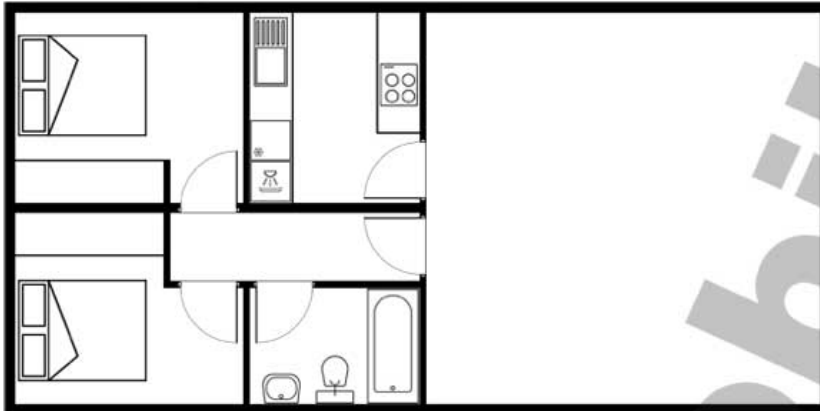


20 x 60FT / 6.9 x 18.28M



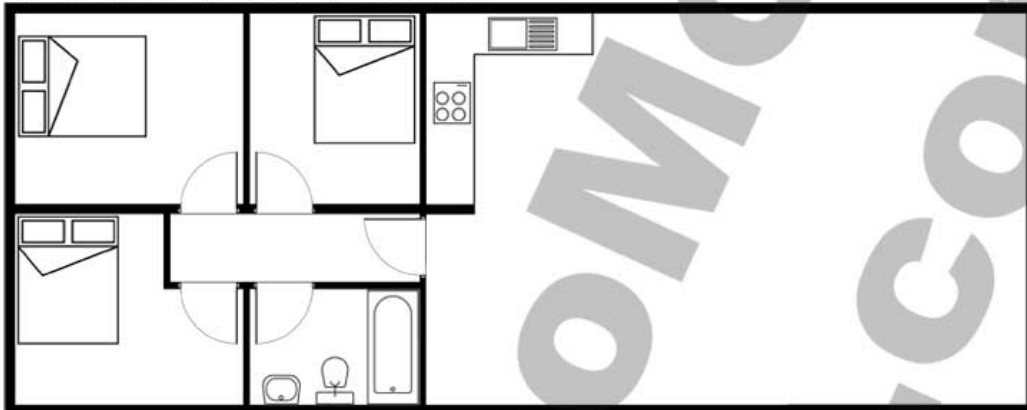


20 x 40FT / 6.9 x 12.19M

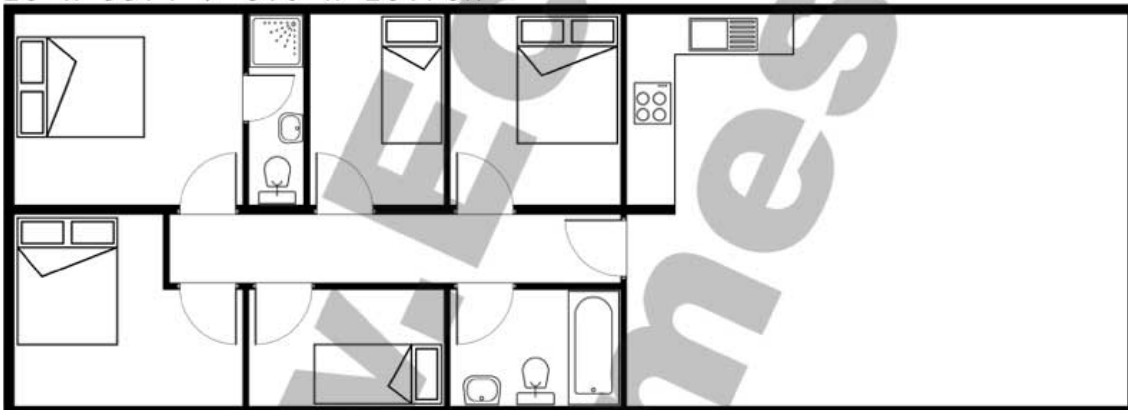


**SET2**

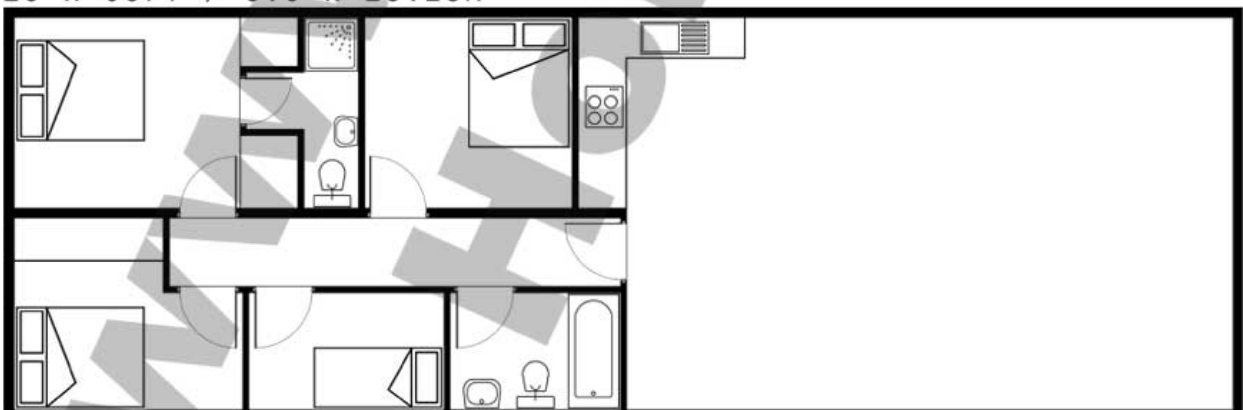
20 x 50FT / 6.9 x 15.24M



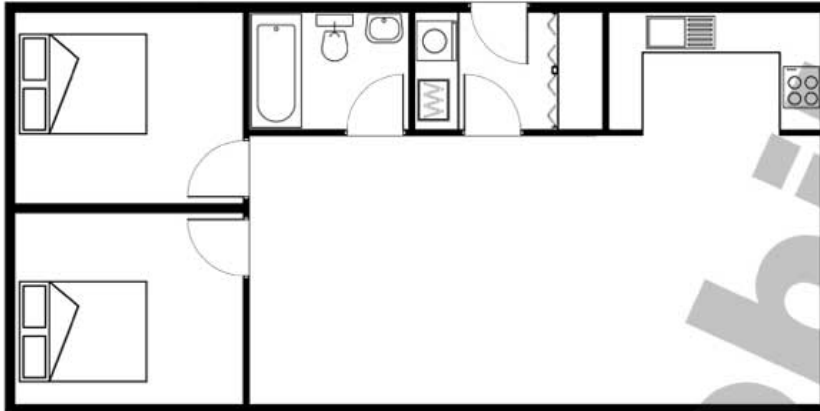
20 x 55FT / 6.9 x 16.76M



20 x 60FT / 6.9 x 18.28M

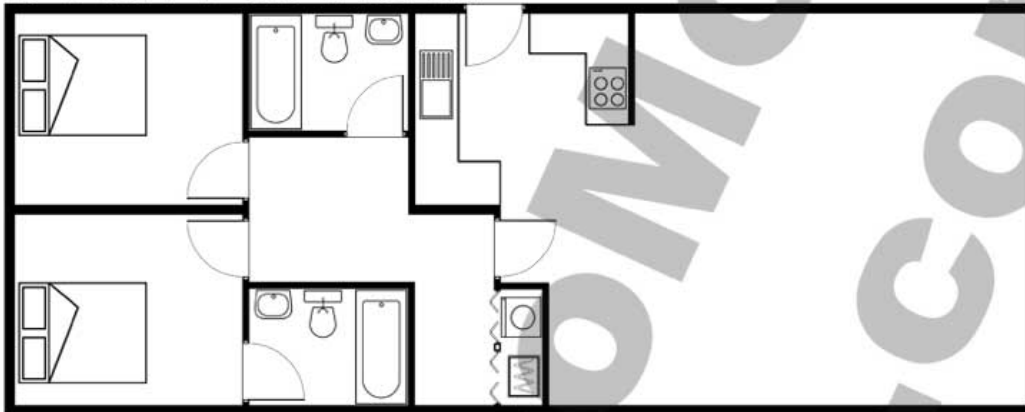


20 x 40FT / 6.9 x 12.19M



**SET3**

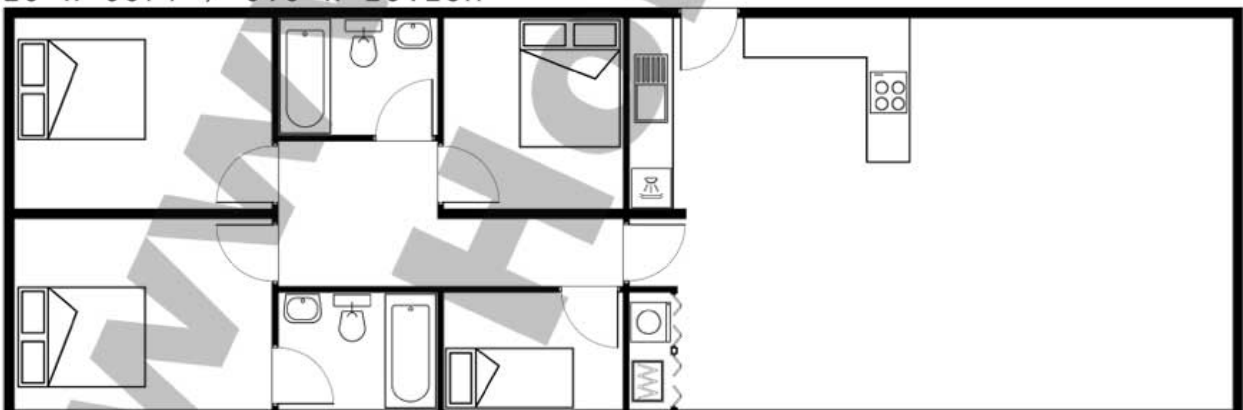
20 x 50FT / 6.9 x 15.24M



20 x 55FT / 6.9 x 16.76M

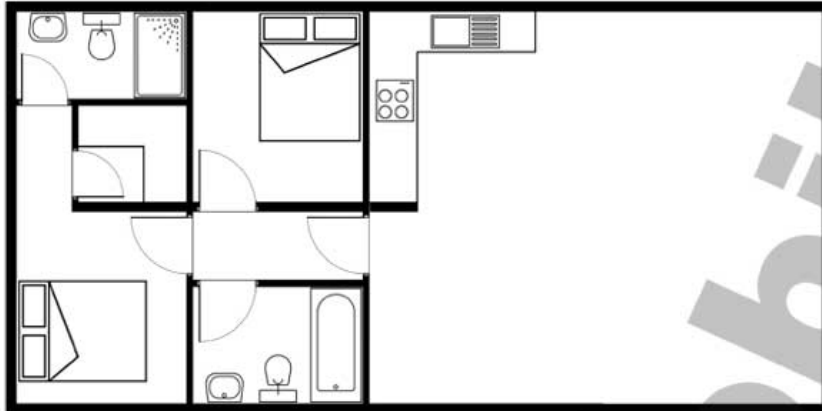


20 x 60FT / 6.9 x 18.28M





20 x 40FT / 6.9 x 12.19M

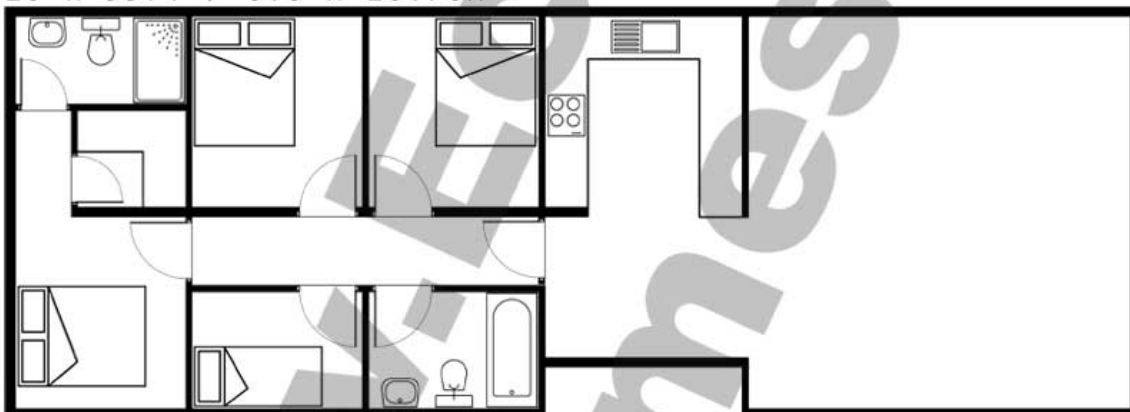


**SET4**

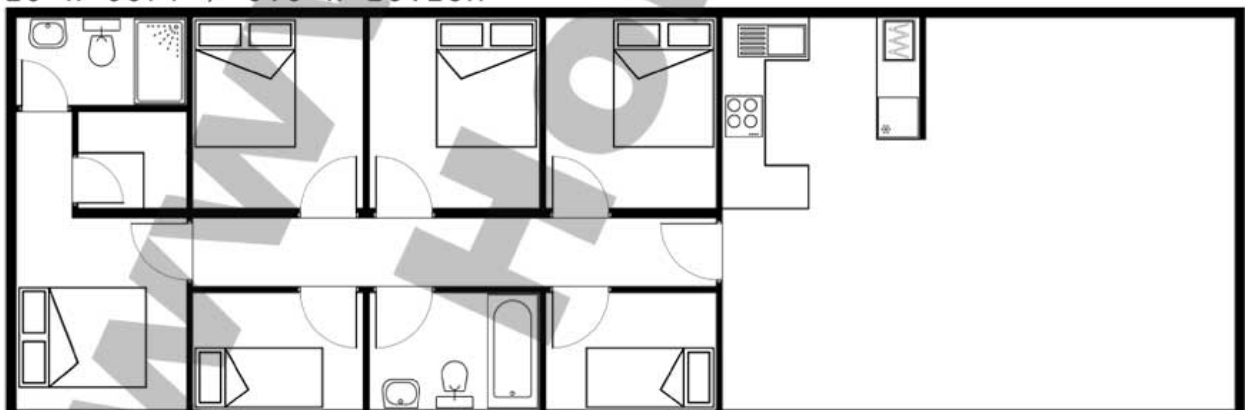
20 x 50FT / 6.9 x 15.24M



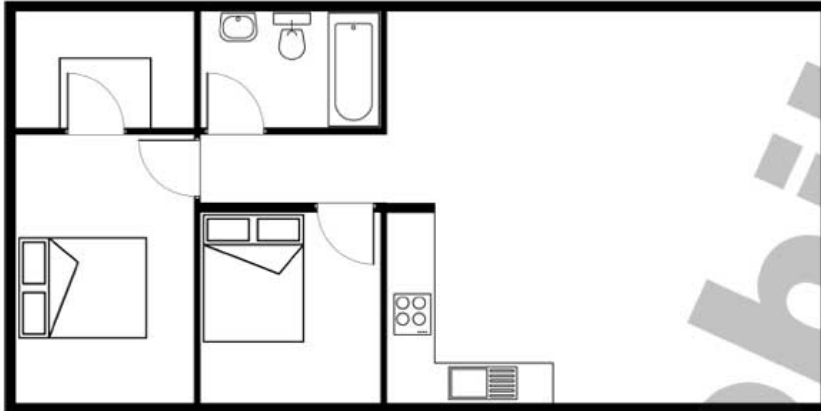
20 x 55FT / 6.9 x 16.76M



20 x 60FT / 6.9 x 18.28M

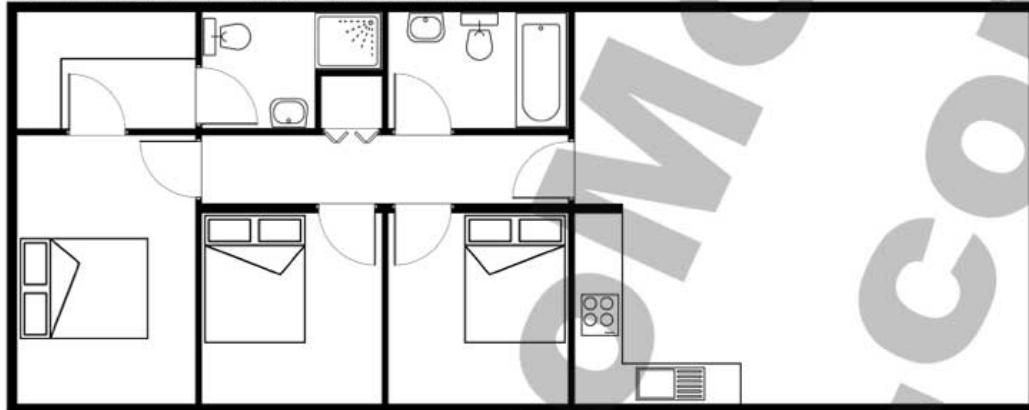


20 x 40FT / 6.9 x 12.19M

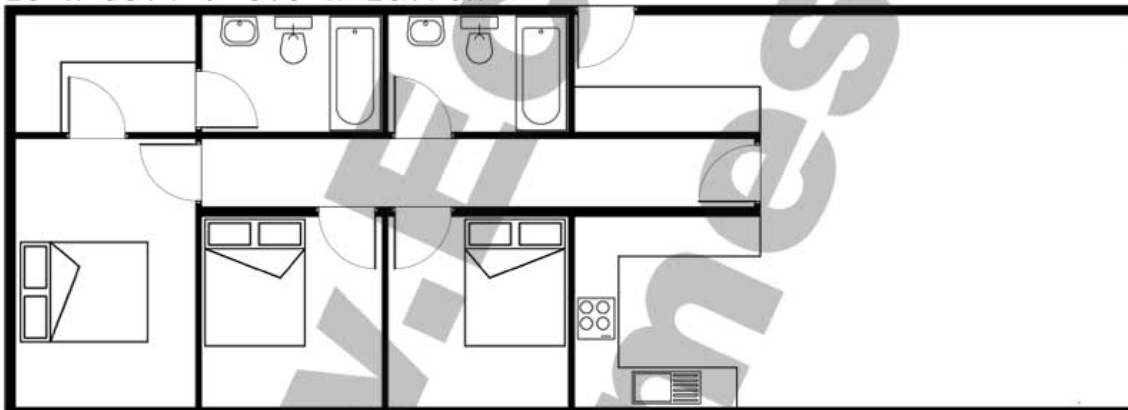


**SET5**

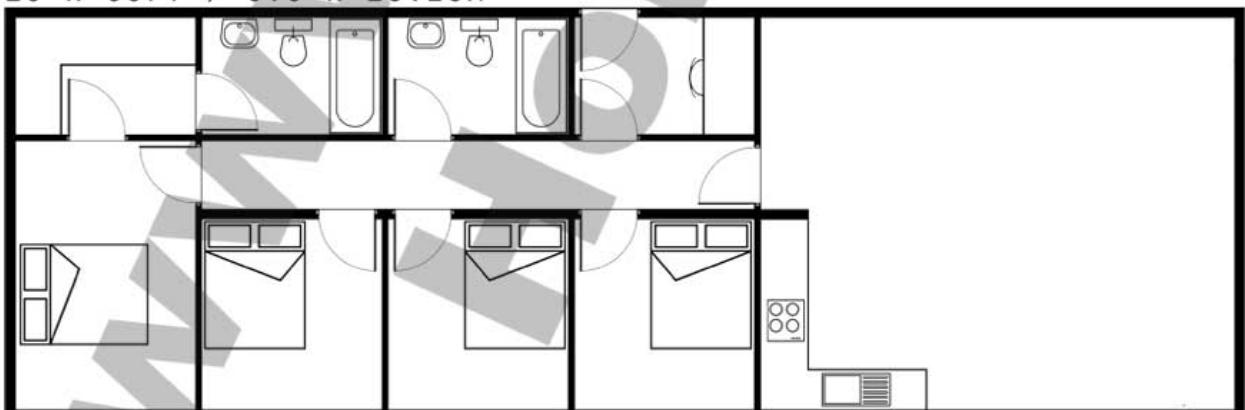
20 x 50FT / 6.9 x 15.24M



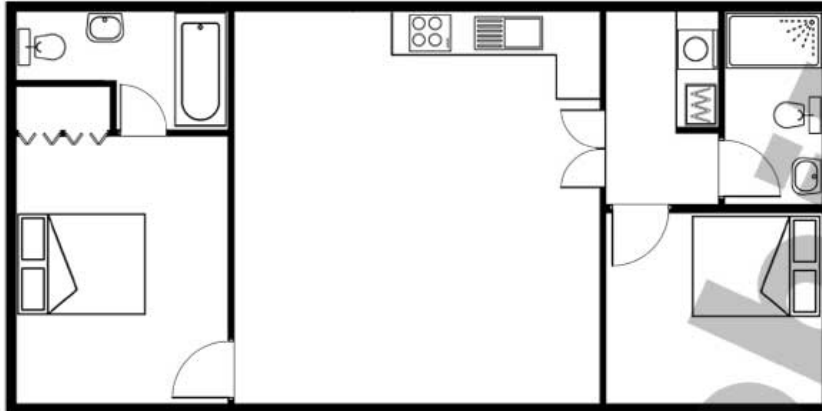
20 x 55FT / 6.9 x 16.76M



20 x 60FT / 6.9 x 18.28M

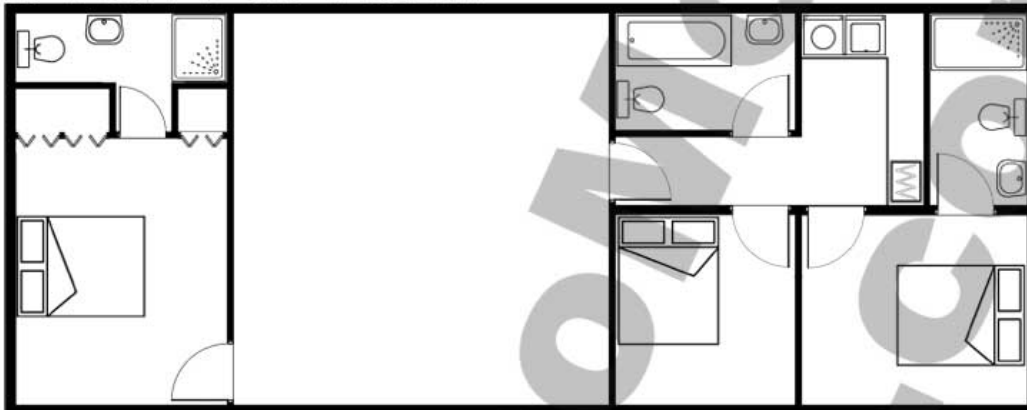


20 x 40FT / 6.9 x 12.19M

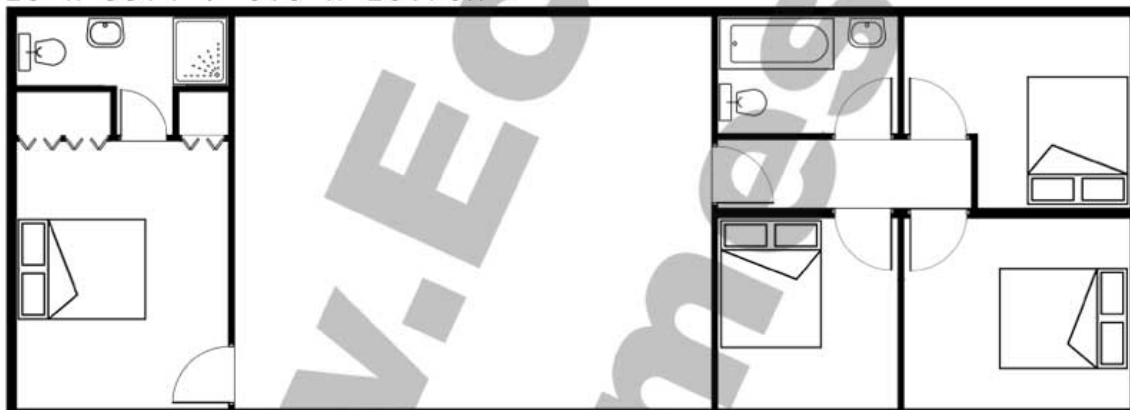


**SET6**

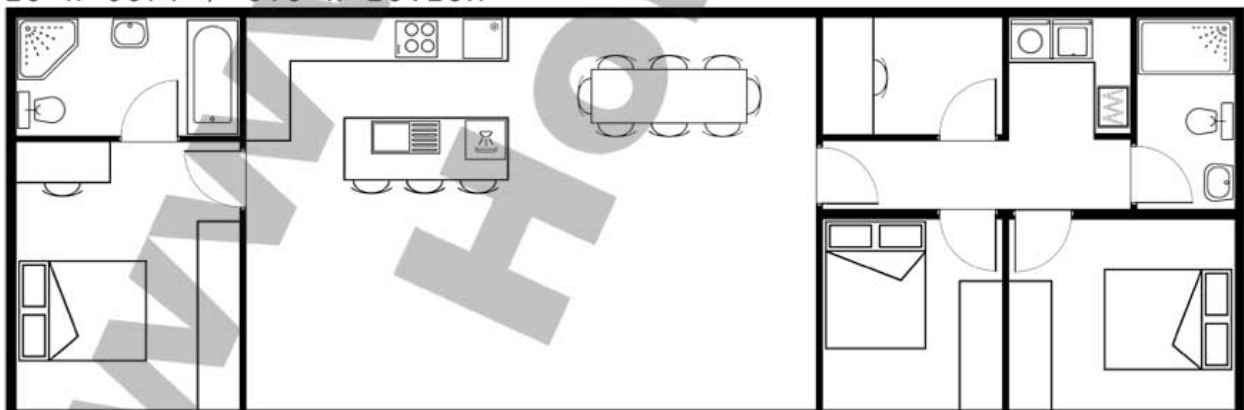
20 x 50FT / 6.9 x 15.24M



20 x 55FT / 6.9 x 16.76M

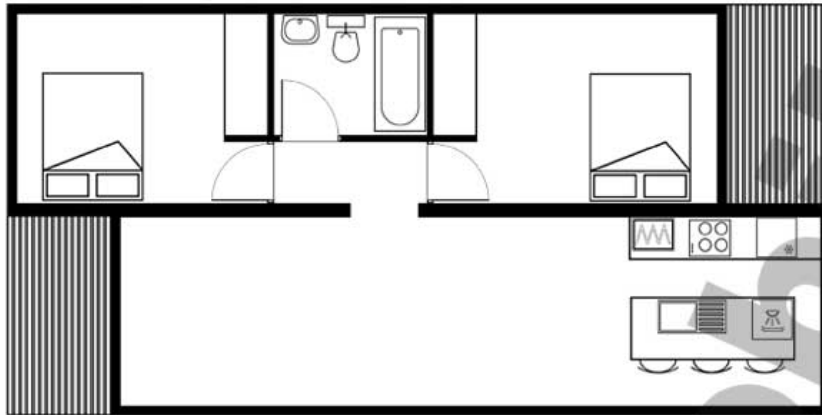


20 x 60FT / 6.9 x 18.28M



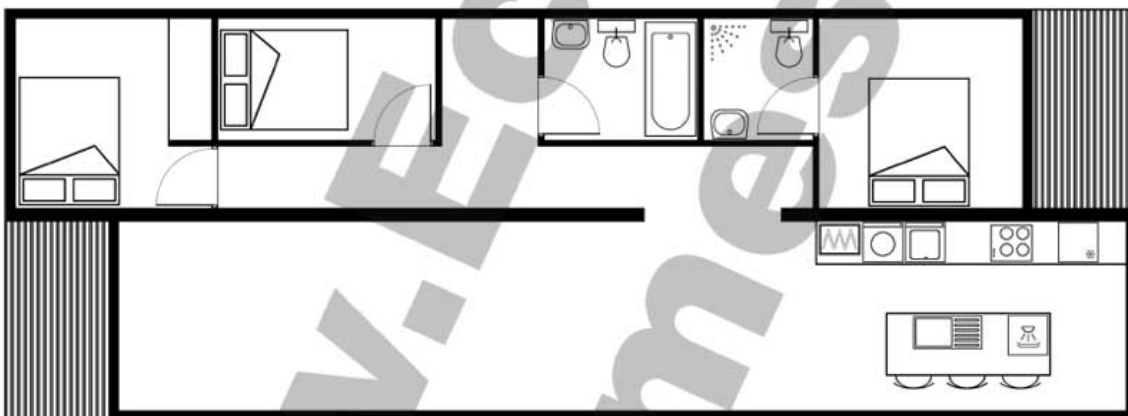
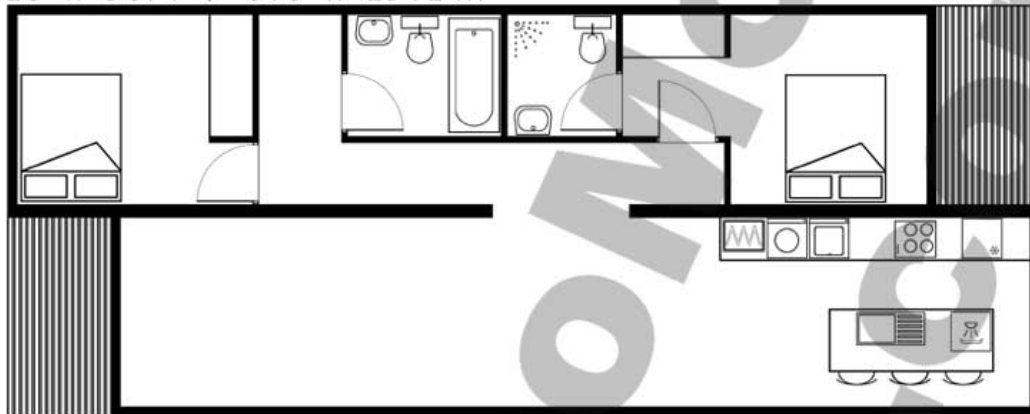


20 x 40FT / 6.9 x 12.19M

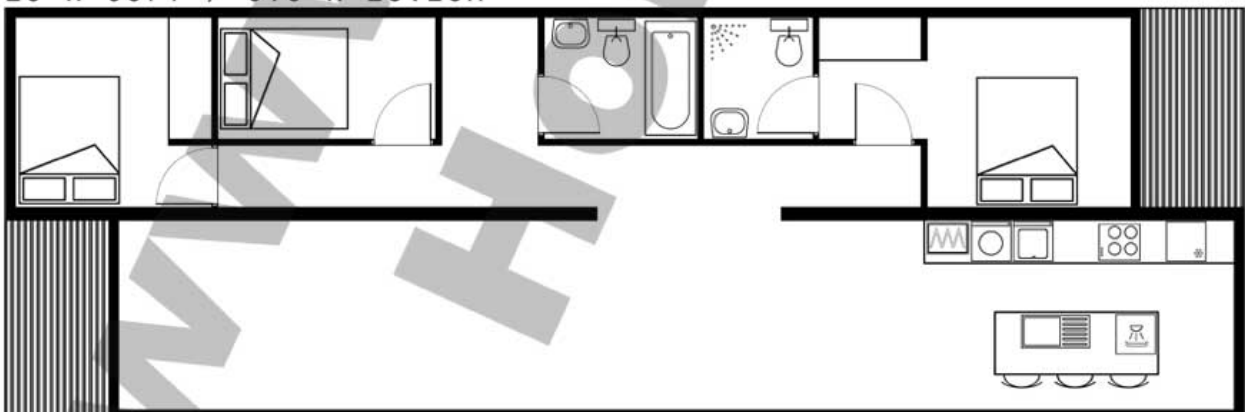


**SET7**

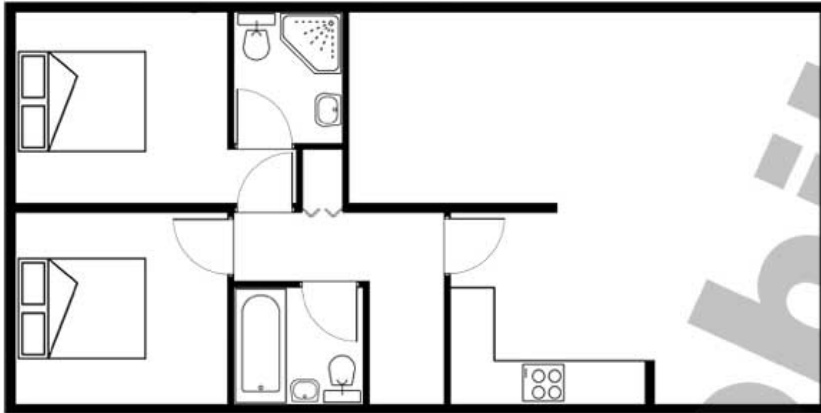
20 x 50FT / 6.9 x 15.24M



20 x 60FT / 6.9 x 18.28M

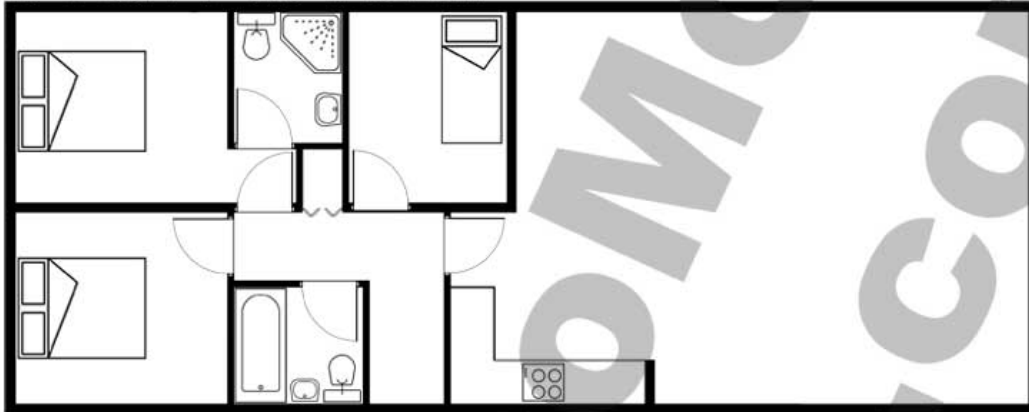


20 x 40FT / 6.9 x 12.19M

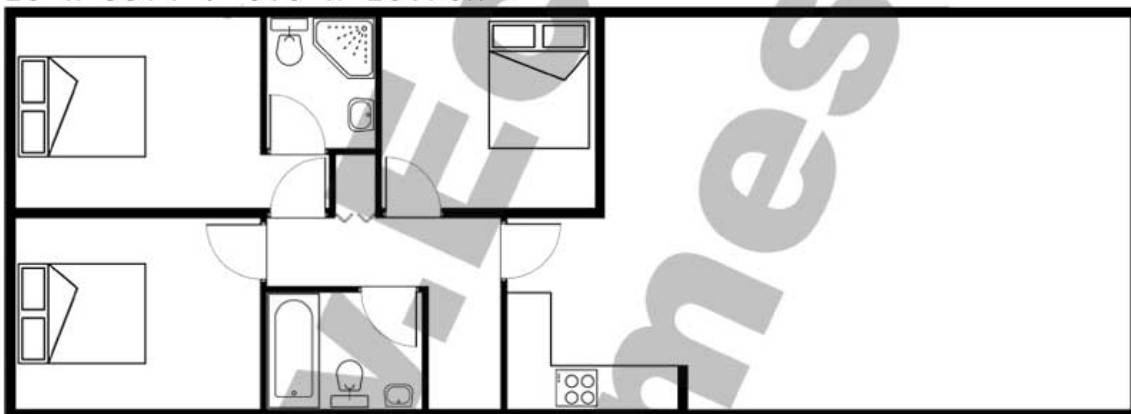


**SET9**

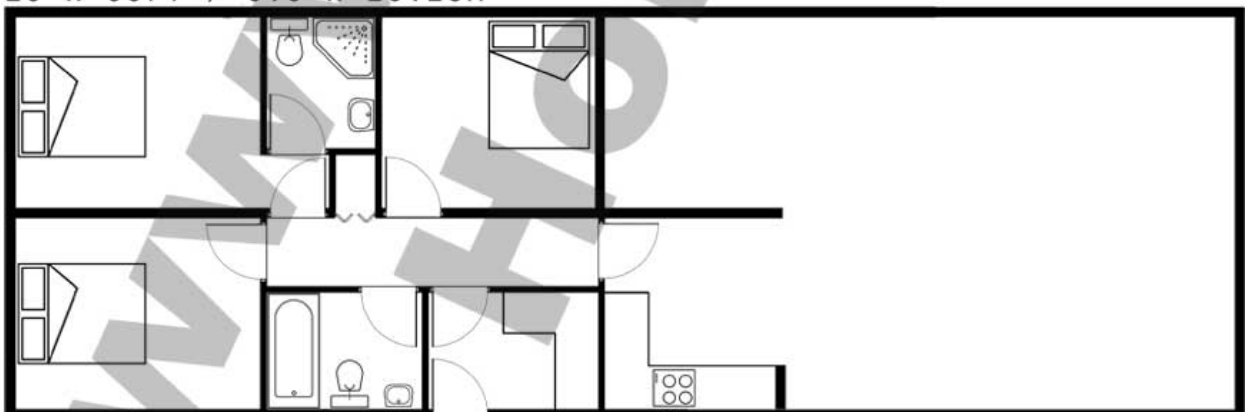
20 x 50FT / 6.9 x 15.24M



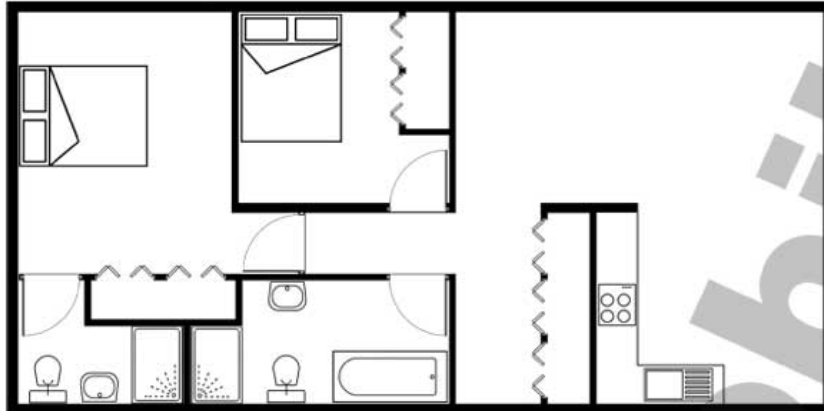
20 x 55FT / 6.9 x 16.76M



20 x 60FT / 6.9 x 18.28M

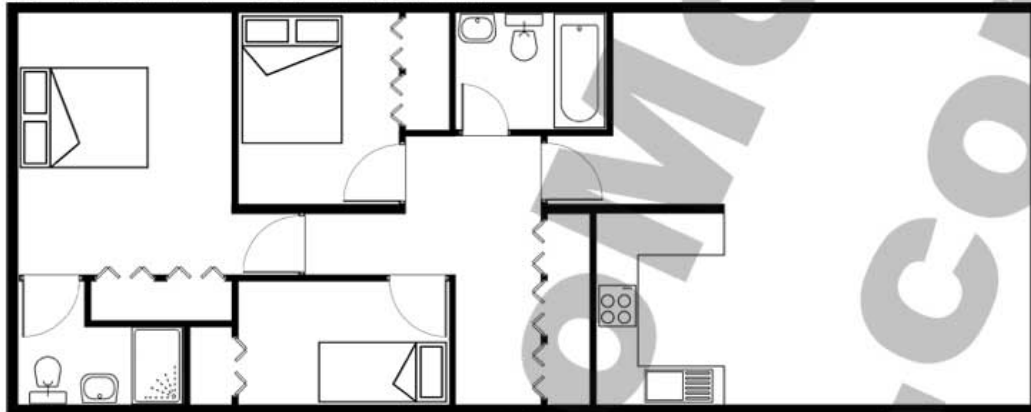


20 x 40FT / 6.9 x 12.19M

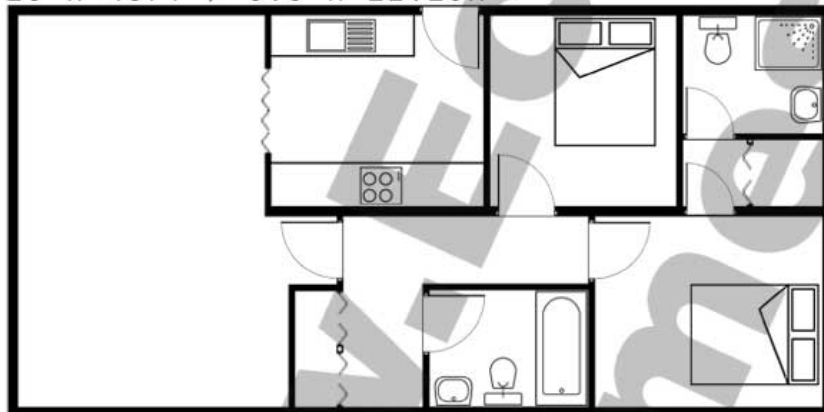


**SET10**

20 x 50FT / 6.9 x 15.24M



20 x 40FT / 6.9 x 12.19M



**SET11**

20 x 50FT / 6.9 x 15.24M

